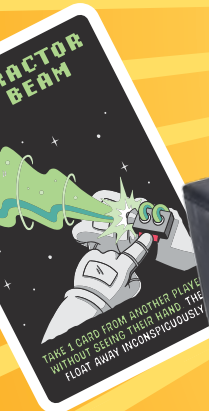


Ridley's[®] GAMES









SPRING 2024



CHRONICLE BOOKS

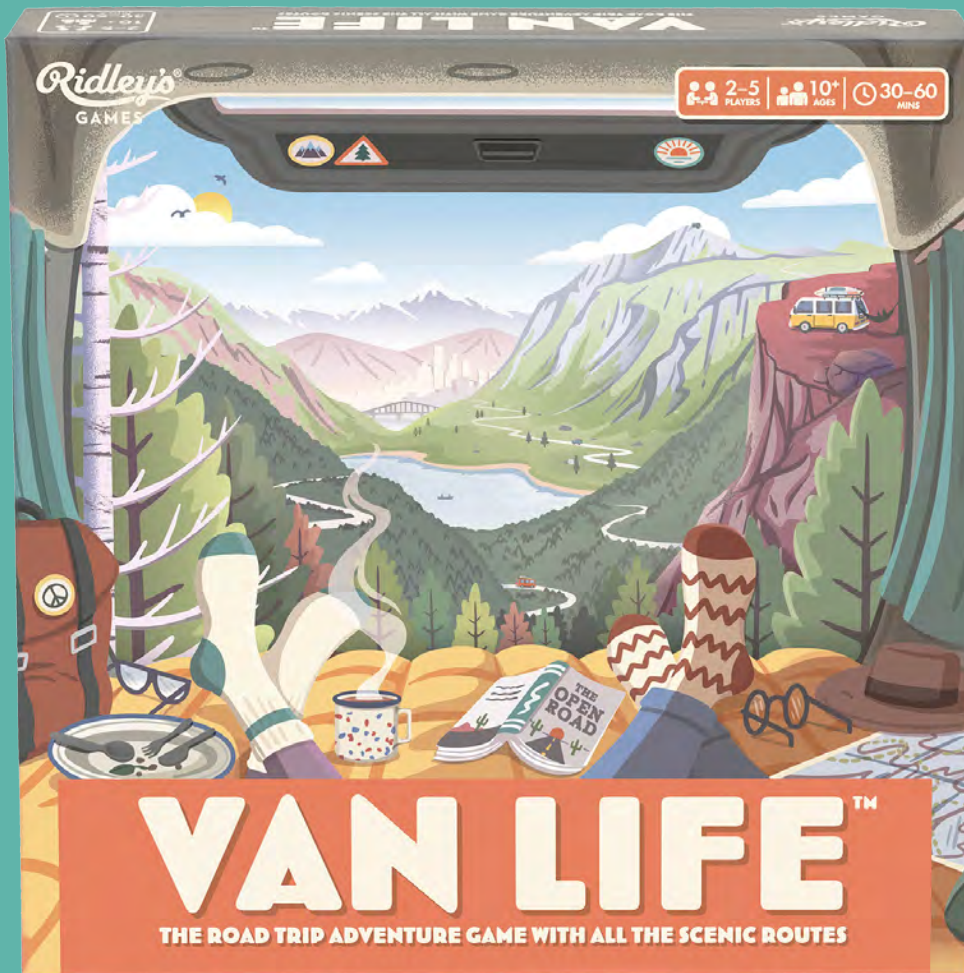
SPRING 2024

Card Games	4
Roll & Write Games	24
Escape Room Games	28
Mini Games	32
Party Games	38
Jigsaws, Trivia, Playing Cards & Jokes	54
Licensed Games, Trivia & Puzzles	82

 Bellyband  One-piece Box  Two-piece Box
 CDU  Hangtag  Book

CARD GAMES

From fast-paced reaction games and trend-driven originals to calming solo player games and fresh takes on timeless classics, we have card games for all the family ages six and up.



AIM OF GAME

In this fun, travel-themed board game, players compete to see who can explore the adventurous island of Vantopia for a year and experience the most awesome Van Life™! As the seasons pass and events unfold, players travel around the board, visit the destinations in their hands, and earn Adventure Points for each completed journey. Along the way, learn new skills that earn you bonus Adventure Points at specific destinations on your travels. The player with the most Adventure Points at the end of the year wins!

WHO IT'S FOR

Perfect for friends, families, and travel and road trip enthusiasts.

WHAT'S INSIDE

50 Adventure Cards, 50 Let's Go Cards, 10 Life Cards, 10 Tour Cards, 10 van tokens, 10 action tokens, 5 wooden van meeples, 1 first player token, 1 gameboard, and instructions. Printed using FSC paper and soy inks.



VAN LIFE™

Package size:

7.5 x 7.5 x 1.6 in
190 x 190 x 40 mm

Carton Quantity: 12

0810073342460



2-5 10+ 30-60 MINS





AIM OF GAME

In this third edition of our bestselling Selfish™ game, you and the other survivors must keep your heads above water as you swim through the ocean. Navigate dangerous seas, a terrifyingly large Kraken, ravenous sharks, and, worst of all, each other to try to preserve your rations for long enough either to be the first to reach the raft or the last one swimming. To really up the ante, the first player to reach the raft gets to decide whether they'll allow other players to join them or simply stretch out and savor the extra leg room. So, are you feeling selfless or selfish?

WHO IT'S FOR

Perfect for friends, families, and lovers of light strategy games.

WHAT'S INSIDE

78 Game cards, 40 Ocean cards, 5 Castaway cards, 2 Shark cards, 1 Raft card, 2 Waypoint strips, and instructions. Box made using 30% recycled materials. Tray made using 100% recycled materials. Printed using FSC paper and soy inks.



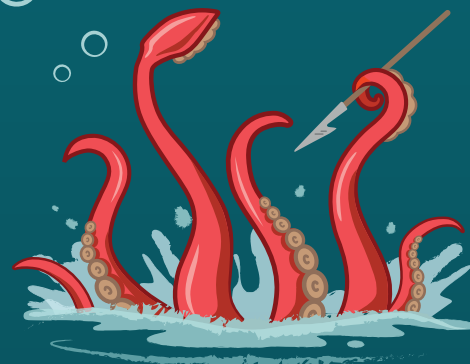
SELFISH™: SHIPWRECKED EDITION

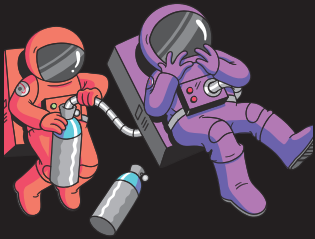
Package size:
8.2 x 6.4 x 1.8 in
162 x 209 x 45 mm

Carton Quantity: 24
0810073342514



2-5  8+  20 MINS 






SELFISH™: SPACE EDITION

Light strategy card game with space theme. Includes 5 Astronaut cards, 48 Oxygen cards, 42 Space cards, 30 Game cards, 5 Reference cards, 1 Spaceship card, Mission guide, and English instructions. Printed using FSC paper and soy inks.

Package size:

8.2 x 6.4 x 1.8 in
162 x 209 x 45 mm

Carton Quantity: 24
5055923767108 



2-5  8+  20 MINS 



SELFISH™: ZOMBIE EDITION

Light strategy card game with zombie theme. Includes 5 Survivor cards, 48 Supplies cards, 41 Wasteland cards, 33 Game cards, 5 Reference cards, 1 Chopper card, 1 wooden die, Survival Guide, and English instructions. Printed using FSC paper and soy inks.

Package size:

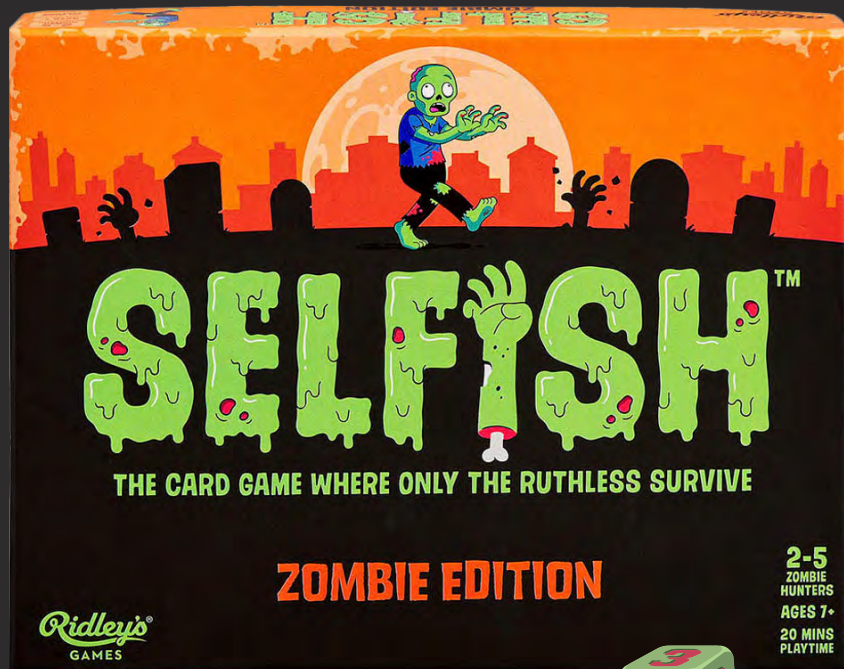
8.2 x 6.4 x 1.8 in
162 x 209 x 45 mm

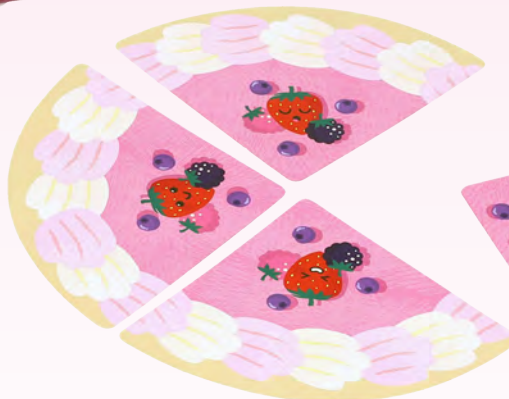
Carton Quantity: 24

5055923765739 



2-5  8+  20 MINS 





AIM OF GAME

In this fast-paced card game, you are competing to be the first player to bake three perfect cakes to win. Each baker starts by drawing four cake slice cards face-up to create their baking area. When everyone's ready shout "3-2-1, PASS THE CAKE" to begin a frosting frenzy! All bakers draw a card from their pile at the same time and decide whether to keep it to begin baking that cake or pass it on. Collect four slices of the same type to complete a cake, then you move it to your cooling rack and get started on the next cake immediately. But watch out for your fellow bakers as they'll try to sabotage you! The icing on the cake? If a baker completes an entire cake using four Confetti Cake cards, they claim a sweet instant victory!

WHO IT'S FOR

Perfect for friends, families, and lovers of bake offs.

WHAT'S INSIDE

90 cake slice-shaped Game cards and EFIGS instructions in cake-slice shaped box. Printed using FSC paper and soy inks. Recyclable.

PIECE OF CAKE

Package size:

4.9 x 4.3 x 1 in

110 x 125 x 25 mm

Carton Quantity: 24

0810073342378



2-4  6+  15  MINS



PIE Y'ALL™ CDU OF 6

Don't be the one left with pie on your face! The object of the game is to avoid being the last player with cards, so you'll want to give away as much pie as possible. Includes 52 cards and EFIGS instructions. Ages 8+. 2-5 players. Average 15 mins gameplay.

CDU size:

4.6 x 4.5 x 6.7 in
114 x 117 x 170 mm

Package size:

4.5 x 4.5 x 1 in
113 x 115 x 25 mm

Carton Quantity: 48

0810073342118  

For internal store use only.
Cannot be ordered in individual units.
0810073341739





2+  6+  15 
MINS

NOPE!™

Simple yet strategic, Nope!™ is an addictive colour-matching card game with a whole new twist. Can you be the last player with cards? Includes 104 Game cards and instructions.

Package size:

3.7 x 5.9 x 0.8 in
150 x 95 x 20 mm

Carton Quantity: 48
5055923757871





GO BLOB FISH!

A blob-tastic twist on the classic card game



GO BLOB FISH CDU OF 6

'Go Fish' style card game with a cute and fun blob fish theme. Includes 62 cards and EFIGS instructions packaged in a hangtag box. Ages 6+. 2-6 players. A verage 15 mins gameplay.



CDU size:

4.8 x 6.5 x 3.5 in
166 x 123 x 90 mm

Package size:

2.3 x 4.6 x 1 in
117 x 59 x 31 mm

Carton Quantity: 36

0810073340923



For internal store use only.
Cannot be ordered in individual units.
0810073340527

DON'T HOLD IT

A NEW TWIST ON THE CLASSIC GAME OLD MAID



DON'T HOLD IT CDU OF 6

'Old Maid' style card game with poo theme. Includes 62 cards and EFIGS instructions packaged in a hangtag box. Ages 6+. 3-5 players. Average 15 mins gameplay.

CDU size:

4.8 x 6.7 x 3.6 in
170 x 123 x 92 mm

Package size:

2.3 x 3.5 x 1 in
117 x 59 x 29 mm

Carton Quantity: 36

0810073340947



For internal store use only.
Cannot be ordered in individual units.
0810073340503





BEAT THE COMPETITION TO LEAD YOUR TEAM TO GLORY!



AIM OF GAME

In this fast-paced card game, players engage in offensive and defensive (Attack vs Defense) scenarios and try to finish each match with the most goals—but only one player's "team" can be victorious! There are two ways to play, in a League or Knockout tournament style, and each match consists of 6 rounds of multiple Attack vs Defense moves from each player. The player who has scored the most goals when the Full Time whistle blows is the winner! In the event of a tie, play moves into the Penalty Shootout round to decide who is the ultimate champion.

WHO IT'S FOR

Perfect for families, football/soccer fans and non-sport fans alike.

WHAT'S INSIDE

36 Player cards, 8 Time cards, 4 Coach cards, 4 Subs cards, 2 Penalty Round cards, 18 goal tokens, and instructions. Printed using FSC paper and soy inks.

KICK IT™ CDU OF 6

CDU size:

9 x 4.3 x 13.3 in
110 x 228 x 338 mm

Package size:

4.3 x 4.3 x 4.3 in
108 x 108 x 108 mm

Carton Quantity: 24

0810073342415  



For internal store use only.

Cannot be ordered in individual units.
0810073342408

2-4  8+  10  MINS





AIM OF GAME

In this easy-to-learn card game, your aim is to create as many three-in-a-row matches as possible to collect Roarsome points. The person who last saw a dinosaur (whether a fossil, cartoon, or walking down the street) goes first. Players take turns drawing cards and playing them onto the shared grid to create columns or rows of three matching cards. Every time there is a match, the double-sided cards get flipped over to create new chances. Oh, and watch out for the dino poop! The first player to collect 10 Roarsome points wins!

WHO IT'S FOR

Perfect for friends, families, and dinosaur fans!

WHAT'S INSIDE

60 double-sided Game cards and EFIGS instructions in a dinosaur egg-shaped case. The case is made using biodegradable cornstarch. Content printed using FSC paper and soy inks.

ROARSOME! CDU OF 6



CDU size:

7.8 x 5.4 x 9.1 in
136 x 199 x 231 mm

Package size:

3.7 x 5.1 x 2.7 in
130 x 95 x 68 mm

Carton Quantity: 24

0810073343092  



For internal store use only.
Cannot be ordered in individual units.
0810073343085

2-4  6+  20 MINS 





LUCKY CAT CARD GAME CDU OF 6

Cat-themed card collecting game in novelty cat-shaped case. Includes 65 Game cards, 4 Reference cards, and EFIGS instructions. Ages 7+. 2-4 players. Average 20 mins gameplay.

CDU size:

8 x 11.6 x 11.1 in
295 x 202 x 282 mm

Package size:

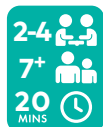
3.5 x 4.7 x 3.3 in
119 x 89 x 84 mm

Carton Quantity: 24

0810073340121



For internal store use only.
Cannot be ordered in individual units.
5055923781098



NO LLAMAS™ CDU OF 6

Llama-themed card matching game in novelty llama-shaped zip plush pouch. Includes 52 Game cards, 12 Llama tokens and EFIGS instructions. Ages 8+. 2-5 players. Average 20 mins gameplay.

CDU size:

6.5 x 13 x 7.3 in
330 x 165 x 185 mm

Package size:

4 x 9.5 x 2.8 in
240 x 100 x 70 mm

Carton Quantity: 24

0810073340114



For internal store use only.
Cannot be ordered in individual units.
5055923776230





AIM OF GAME

Forage for the best fungi in this card-collecting game that will definitely grow on you. The aim is to try to collect clusters of 2 to 4 different fungi. Each completed cluster has a points value, and the player who reaches ten points first will be crowned champion!

WHO IT'S FOR

Perfect for friends, families, and fungi fans.

WHAT'S INSIDE

Includes 60 Fungi cards, 35 point tokens, and instructions.

FUNKY FUNGI

CDU size:

9 x 5.5 x 5.7 in
140 x 230 x 145 mm

Package size:

4.3 x 4.3 x 1.8 in
110 x 110 x 45 mm

Carton Quantity: 24

0810073341517



0810073341517

For internal store use only.
Cannot be ordered in individual units.
0810073341739

2-4 8+ 30 MINS



AIM OF GAME

See who's the best at monster spotting in this snap card game! You and your friends are out searching for the elusive Stomp, the Monster. But on your trek, you've lost your batteries and only have one working camera between you all! The aim of the game is to be the first player to collect two batteries and have the camera in front of you to snap a picture of Stomp to win!

WHO IT'S FOR

Perfect for families and groups of friends, and for Halloween or year-round monster fun!

WHAT'S INSIDE

Includes 70 cards and EFIGS instructions.



STOMP THE MONSTER CDU OF 6

CDU size:

8.3 x 5 x 10 in
130 x 210 x 252 mm

Package size:

4 x 5 x 3.1 in
125 x 100 x 80 mm

Carton Quantity: 36

0810073342057



0 810073 342057

For internal store use only.
Cannot be ordered in individual units.
0810073341821

2+ 6+ 10 MINS





AIM OF GAME

Develop helpful mindfulness techniques to combat stress and burnout with this solo game that's a guided practice to promote wellness and self care in your day-to-day. Simply roll the wooden dice and deal out four cards that match the symbols you've rolled. There are 6 categories, including 'Notice Your Thoughts' and 'Time In Nature', and each card contains a prompt that will encourage you to take a moment to engage the five senses. This meditative, screen-free activity is the perfect way to relax, unwind, and reconnect with yourself.

WHO IT'S FOR

Perfect for young people and adults to slot into their daily routine to give a much deserved moment of calm.

WHAT'S INSIDE

Includes 60 Mindfulness cards, 4 wooden dice, and instructions. Printed using FSC paper and soy inks.



WHERE'S YOUR HEAD AT?™ CDU OF 6

CDU size:

11.2 x 4.2 x 4.2 in
107 x 284 x 107 mm

Package size:

5.3 x 3.8 x 1.2 in
97 x 135 x 30 mm

Carton Quantity: 24

0810073342187  



0 810073 342187

For internal store use only.
Cannot be ordered in individual units.
0810073341760

1  12+  15  MINS



ROLL & WRITE GAMES

With figurines and target areas rather than cards, our roll & write games offer portable entertainment for ages seven and up.

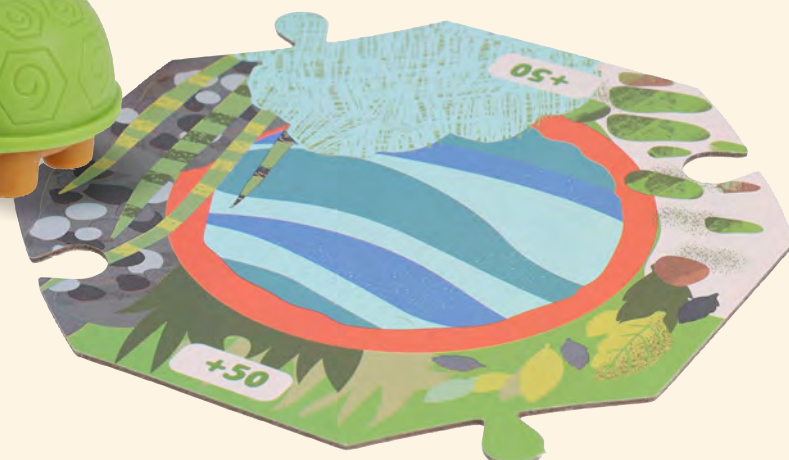
 **WARNING:**
CHOKING HAZARD - Small parts.
Not for children under 3 years.

Ridley's
GAMES

1+
PLAYERS
8+
AGES
15
MINS

TORTOISE TUMBLE

ONE SHELL OF A TORTOISE-ROLLING GAME



AIM OF GAME

Get ready to roll your way to victory in this fun tumbling game! Impress your fellow players with your skills as you roll tortoises across the garden to score. You can piece together the jigsaw-style garden scene cards in a different way each time you play, so no two games are ever the same. How and where your tortoises land determines how many points you win, so you'll want to work out your best tumbling technique as quickly as you can. But be careful not to land on your back—that would be extremely embarrassing! The first player to earn 500 points is the winner and is crowned Top Tortoise Tumbler. Playing solo? Beat your own score in five turns!

WHO IT'S FOR

Perfect for friends, families, and lovers of tortoises.

WHAT'S INSIDE


Two rubber tortoises, nine garden scene cards, scorepad, and instructions. Printed using FSC paper and soy inks.

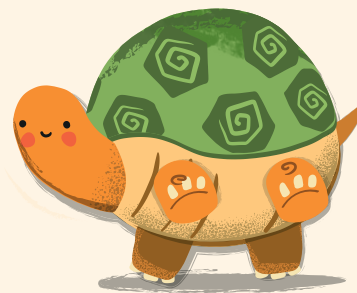
TORTOISE TUMBLE

Package size:

6 x 4.7 x 1.2 in
120 x 150 x 30 mm

Carton Quantity: 24

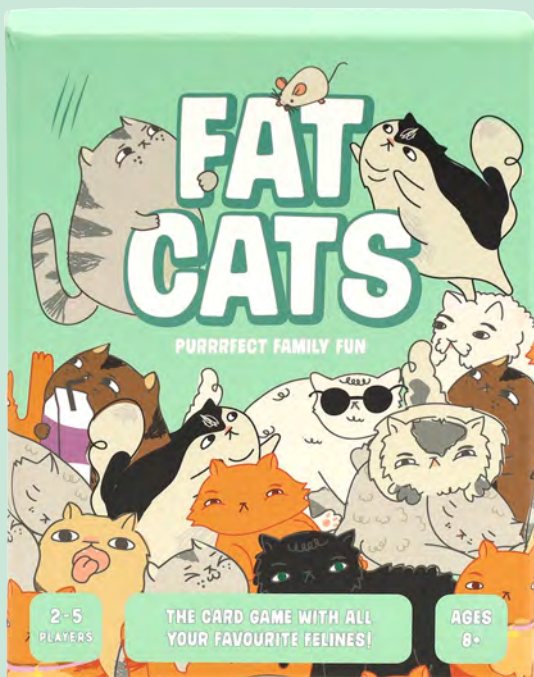
9781797228297 



1+  8+  15  MINS

MINI GAMES

For entertainment on the go, our range of mini games offers tons of fun in small packages for ages six and up.



AIM OF GAME

Tricks win the treats in this a-meows-ing strategy card game. Players have two rounds to win after starting off with nine trick cards for nine chances to be the ultimate Fat Cat. Each trick and treat card has a points value, and players must choose which trick cards to play to score the most highly prized treats. Can the most pitiful sad eyes trick win the treat of a nice long nap? Or a cat-tastic performance land a tasty fishy? It's the most strategic cat who will land the most treat points in their kitty.

WHO IT'S FOR

Purrfect for friends, families, and cat lovers.

WHAT'S INSIDE

Includes 96 game cards and instructions.

FAT CATS

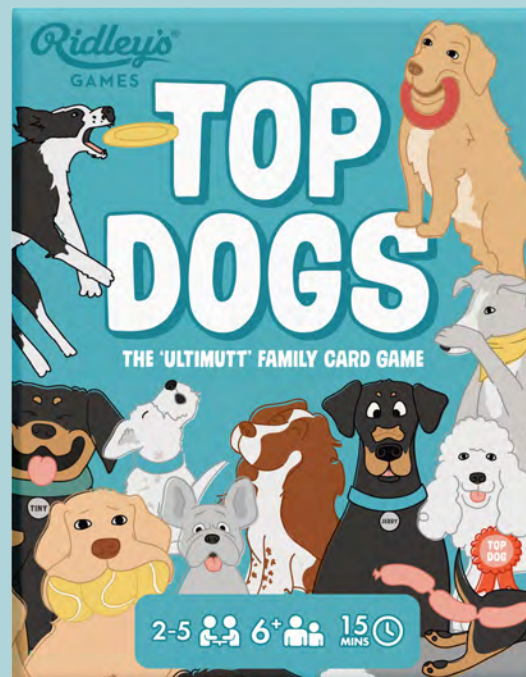
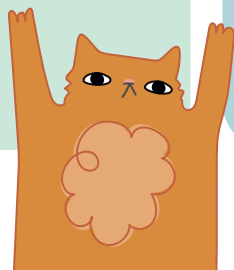
Package size:

3.9 x 5.3 x 1.6 in
135 x 100 x 40 mm

Carton Quantity: 24
0810073340510



2-5 6+ 15 MINS



AIM OF GAME

Tricks win the treats in this barking good strategy card game. Players have two rounds to win after starting off with nine trick cards for nine chances to be the ultimutt Top Dog. Each trick and treat card has a points value, and players must choose which trick cards to play to score the most highly prized treats. Can playing fetch win the treat of a good head scratch? Or can a balancing act land some tasty sausages? Sniff out the 'Top Dog' card which will trump all the other tricks! Will you be top dog or sent to the doghouse?

WHO IT'S FOR

Pawfect for friends, families, and dog lovers.

WHAT'S INSIDE

Includes 96 game cards and instructions.

TOP DOGS

Package size:

3.9 x 5.3 x 1.6 in
135 x 100 x 40 mm

Carton Quantity: 24
0810073341333



2-5 6+ 15 MINS

CRAZY GOLF



1-5 6+ 20 MINS

A dice version of the popular outdoor game. Players can build their own course and then play through it, facing obstacles such as windmills, volcanoes, black holes and more!

CRAZY GOLF

Crazy-golf themed dice game. Includes 40 Game cards, 5 player tokens, 3 dice, 1 score pad, 1 pencil, and instructions. Ages 6+. 1-5 players. Average 20 mins gameplay.

Package size:

3.9 x 5.9 x 1.8 in
151 x 101 x 46 mm

Carton Quantity: 24 **505592378111**



5 055923 781111 >

PARTY GAMES

Whether you're staying in with family or heading out with friends, we've got party games to make every event memorable.

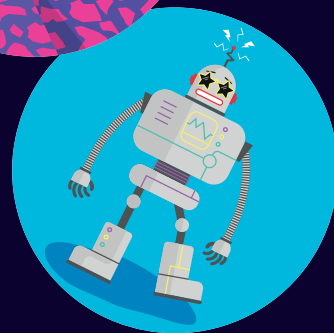
DISCO BALLS

A party game for the whole family

An energetic card game of dance moves and hilarious missteps.

When a matching pair is revealed be the first to bust the right move and win the cards!

BUST A MOVE



DISCO BALL GAME CDU OF 6

Disco-themed card game featuring dance gameplay. Includes 60 game cards, and EFIGS instructions in a 2-piece disco ball tin. Ages 8+. 3-6 players. Average 15 mins gameplay.

CDU size:

9 x 8.3 x 13.25 in

112 x 228 x 338 mm

Package size:

4.3 x 4.3 x 4.3 in

108 x 108 x 108 mm

Carton Quantity: 12

0810073340961



For internal store use only.
Cannot be ordered in individual units.
0810073340497



3-6 8+ 15 MINS



Ridley's
GAMES

2+
PLAYERS
6+
AGES
20
MINS

Waffle Topple™

A WAFFLE-Y
CUTE BALANCING
GAME!

⚠️ **WARNING**
CHOKING HAZARD
Not for children under 3



AIM OF GAME

Stack delicious waffles and topping pieces onto the fork without toppling the stack! Each player takes a turn to roll the die and then attempts to add the shown waffle or topping piece to the stack to try to win points. Steady hands are essential as the more pieces you knock over, the more pieces your opponents add to their piles and the more points they accumulate. The player with the most points wins!

WHO IT'S FOR

Perfect for friends, families, and waffle and brunch lovers.

WHAT'S INSIDE

12 waffle pieces, 24 topping pieces, 1 balancing fork, 1 die, and EFIGS instructions. Made using FSC plywood + MDF. Packaging is 75% recycled material.

WAFFLE TOPPLE™

Package size:

4.1 x 6.9 x 2 in

175 x 105 x 50 mm

Carton Quantity: 24

0810073342354



0810073342354

2+ 6+ 20 MINS



THE SMASH-HIT CARD Game Packed WITH EXTRA FUN!



AIM OF GAME

To serve a brunchier version of our best-selling game Avocado Smash™! Smash correctly to win tasty extras like a fried egg or a slice of tomato to pop atop your Avo Toast token. The player with the most toppings at the end is the winner. Packed with lots more cards and a fresh menu of rules, it's time to boost your breakfast!

WHO IT'S FOR

Friends, families, breakfast and brunch lovers, and Avocado Smash fans.

WHAT'S INSIDE

91 Game cards, 8 Avocado Toast tokens, 15 Toppings tokens, and EFIGS instructions. Packaged in an extra large avocado-shaped case with party hat and holofoil sticker.

AVOCADO SMASH™ PARTY EDITION

Packaged in an extra large avocado-shaped case with party hat and holofoil sticker.

Package size:

4.3 x 7 x 3 in
180 x 105 x 75 mm

Carton Quantity: 12

0810073340466



2-8 6+ 15 MINS



AIM OF GAME

In this spec-taco-lar dice-rolling, push-your-luck game, you'll be at the edge of your plate as you roll the dice to attempt to collect your delicious dishes! The aim is to win tasty food cards and drinks by rolling the right ingredients that match the dish you're trying to make. The more correct ingredients you roll, the harder it will be for another player to challenge you—but rolling too many wrong ingredients will make you go bust and lose your card! Each food card you collect will earn you points, and a complete meal gets you bonuses! The player with the highest-scoring cards in their pile is the winner, so it's best to play hungry!

WHO IT'S FOR

Perfect for friends, families, and anyone loco about tacos.

WHAT'S INSIDE

32 Food cards, 12 Drink cards, 8 Ingredient dice, and instructions. Printed using FSC paper and soy inks.



TACO TIME™

Package size:

5 x 4 x 2.75 in
100 x 129 x 70 mm

Carton Quantity: 36

0810073342422

2-6 8+ 30 MINS



0810073342422



AIM OF GAME

Get a pizza' the action! In this supreme pizza game with all the tasty toppings, try to win points by rolling the dice to match the good type of toppings on a pizza card. But if you roll too many of the bad ingredients listed, you'll go bust for that turn! The player with the most points wins the game as the ultimate pizza aficiona-dough!

WHO IT'S FOR

Perfect for friends, families, pizza lovers, and anyone who loves a cheesy party game.

WHAT'S INSIDE

Includes 44 Pizza cards, 6 Pizza Slice cards, 6 dice, and EFIGS instructions. Printed using FSC paper and soy inks.

GRAB A SLICE™

Package size:

7.5 x 7.5 x 1.5 in
190 x 190 x 38 mm

Carton Quantity: 24

0810073341685



0 810073 341685





ORB'LITERATED DRINKING GAME CDU OF 6

Space-themed drinking card game in a circular tin. Includes 55 Game cards, 6 Drinks Coasters, and instructions. Ages 21+. 2-6 players. Average 15 mins gameplay.

CDU size:

4.6 x 8.5 x 6.1 in
215 x 118 x 155 mm

Package size:

4.5 x 4.3 x 1 in
110 x 115 x 25 mm

Carton Quantity: 24

0810073340978  

For internal store use only.

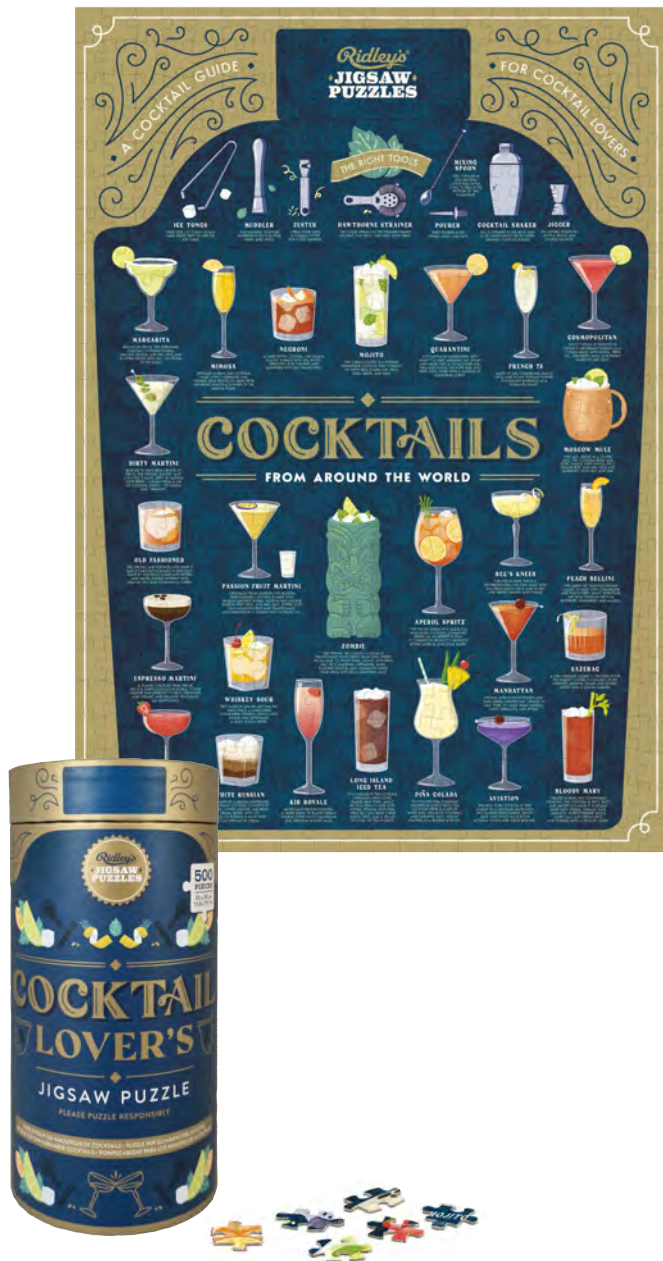
Cannot be ordered in individual units.

0810073340558



JIGSAWS, TRIVIA, PLAYING CARDS & JOKES

Classic fun for everyone to show off their creativity, test their knowledge, share some laughs, and play their favorite game.



COCKTAIL LOVER'S 500-PIECE JIGSAW PUZZLE


Cocktail-themed jigsaw puzzle.
500 pieces. Hand illustrated artwork showing a variety of delicious drinks from around the world. Includes poster guide. Packaged in a card tube. Made using 60% recycled materials and 40% FSC paper. Printed using soy inks.

Jigsaw size:

13.8 x 19.7 in
500 x 350 mm

Package size:

4.1 x 7.9 x 4.1 in
200 x 103 x 103 mm

Carton Quantity: 12
0810073342507 



0810073342507



COFFEE LOVER'S 500-PIECE JIGSAW PUZZLE


Coffee-themed jigsaw puzzle. 500 pieces. Hand illustrated artwork showing a variety of coffee drinks. Includes poster guide. Packaged in card tube.

Jigsaw size:

13.8 x 19.7 in
500 x 350 mm

Package size:

4.1 x 7.9 x 4.1 in
200 x 103 x 103 mm

Carton Quantity: 12
5055923773109 



5 055923 773109 >



This 500-piece jigsaw puzzle and 54 playing cards are the perfect gift for any beer lover. Featuring a collection of traditional and contemporary beers from around the world, with information about the brewing process and famous regions.



BEER LOVER'S 500-PIECE JIGSAW PUZZLE

Beer-themed jigsaw puzzle. 500 pieces. Hand illustrated artwork showing a variety of beers from across the world and the brewing process. Includes poster guide. Packaged in card tube.

Jigsaw size:

13.8 x 19.7 in
500 x 350 mm

Package size:

4.1 x 7.9 x 4.1 in
200 x 103 x 103 mm

Carton Quantity: 12

5055923773093



5 055923 773093 >



Cocktail hour has never been so much fun! Our gin-inspired 500-piece jigsaw puzzle and Gin Rummy playing cards feature beautiful hand drawn illustrations of gin drinks, botanicals, spices, and fun gin facts. Perfect for gin lovers!



**GIN LOVER'S
500-PIECE JIGSAW PUZZLE**


Gin-themed jigsaw puzzle. 500 pieces.
Hand illustrated artwork showing a
variety of gin types, botanicals, and the
distilling process. Includes poster guide.
Packaged in card tube.

Jigsaw size:

13.8 x 19.7 in
500 x 350 mm

Package size:

4.1 x 7.9 x 4.1 in
200 x 103 x 103 mm

Carton Quantity: 12
5055923757932 



5 055923 757932 >



Whisky lovers raise a toast to our whisky inspired 500-piece jigsaw puzzle and 54 playing cards featuring illustrations of ingredients and whisky facts.



WHISKY LOVER'S 500-PIECE JIGSAW PUZZLE

Whisky-themed jigsaw puzzle. 500 pieces.
Hand illustrated artwork. Includes poster guide.
Packaged in card tube.

Jigsaw size:

13.8 x 19.7 in
500 x 350 mm

Package size:

4.1 x 7.9 x 4.1 in
200 x 103 x 103 mm

Carton Quantity: 12

5055923765821



5 055923 765821 >



FOR THE

DONUT LOVERS



DONUT LOVER'S 1000-PIECE JIGSAW PUZZLE

Donut-themed jigsaw puzzle. 1000 pieces.
Hand illustrated artwork of tasty donut treats.
Includes poster guide. Packaged in a card tube.

Jigsaw size:

21.7 x 27.6 in
700 x 550 mm

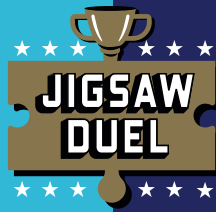
Package size:

4.5 x 12 x 4.5 in
306 x 115 x 115 mm

Carton Quantity: 12

5055923766293





SUGAR SHOWDOWN

DONUT

VS

CUPCAKE



COCKTAIL CLASH

PIÑA COLADA

VS

MANHATTAN



JIGSAW DUEL SUGAR SHOWDOWN

Throw down in a jigsaw duel with this competitive puzzle game. Includes two dessert-themed 70-piece jigsaws (1 donut, 1 cupcake) with only one final piece (the cherry!) that fits both puzzles. Comes with two picture guides, a wooden stand to hold the prized double-sided final piece, and EFIGS instructions. Printed using vegetable inks on FSC paper.

Package size:

6.7 x 8 x 1.5 in
202 x 169 x 39 mm

Carton Quantity: 24
0810073341715



0810073341715

JIGSAW DUEL COCKTAIL CLASH

Throw down in a jigsaw duel with this competitive puzzle game. Includes two cocktail-themed 70-piece jigsaws (1 Piña Colada, 1 Manhattan) with only one final piece (the cocktail napkin!) that fits both puzzles. Comes with two picture guides, a wooden stand to hold the prized double-sided final piece, and EFIGS instructions. Printed using vegetable inks on FSC paper.

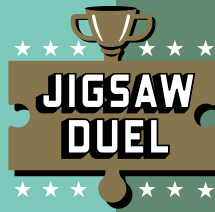
Package size:

6.7 x 8 x 1.5 in
202 x 169 x 39 mm

Carton Quantity: 24
0810073341708



0810073341708



PET PRIDE

CATS VS DOGS



HOUSEPLANTS

CACTI VS TROPICAL



JIGSAW DUEL PET PRIDE

Throw down in a jigsaw duel with this competitive puzzle game. Includes two pet-themed 70-piece jigsaws (1 dog, 1 cat) with only one final piece (the food bowl!) that fits both puzzles. Comes with two picture guides, a wooden stand to hold the prized double-sided final piece, and EFIGS instructions. Printed using vegetable inks on FSC paper.

Package size:

6.7 x 8 x 1.5 in
202 x 169 x 39 mm

Carton Quantity: 24
0810073341357



JIGSAW DUEL HOUSEPLANTS

Throw down in a jigsaw duel with this competitive puzzle game. Includes two house plant-themed 70-piece jigsaws (1 cactus, 1 tropical) with only one final piece (the pots!) that fits both puzzles. Comes with two picture guides, a wooden stand to hold the prized double-sided final piece, and EFIGS instructions. Printed using vegetable inks on FSC paper.

Package size:

6.7 x 8 x 1.5 in
202 x 169 x 39 mm

Carton Quantity: 24
0810073341364



HOUSE PLANTS

Jigsaw Puzzle



HOUSE PLANTS 1000-PIECE JIGSAW PUZZLE

House plant-themed jigsaw puzzle. 1000 pieces. Hand-illustrated artwork showing a variety of popular house plants. Includes poster guide. Packaged in card tube.

Jigsaw size:
21.7 x 27.6 in
700 x 550 mm

Package size:
4.5 x 12 x 4.5 in
306 x 115 x 115 mm

Carton Quantity: 12
0810073340626





INSPIRATIONAL • WOMEN •

COLLECTION

From Rosa Parks to Jane Goodall, be inspired by dozens of incredible women across history with this Jigsaw Puzzle, Trivia Game, and Playing Cards collection.



INSPIRATIONAL WOMEN 1000-PIECE JIGSAW PUZZLE

1000-piece circular jigsaw puzzle featuring illustrations of 54 inspirational women and their achievements. Includes poster guide. Packaged in card tube.

Jigsaw size:

26.8 x 26.8 in
680 x 680 mm

Package size:

4.5 x 12 x 4.5 in
306 x 115 x 115 mm

Carton Quantity: 12

5055923776124





50 AWE-INSPIRING TRAVEL DESTINATIONS BUCKET LIST 1000-PIECE PUZZLE

1000-piece travel-themed jigsaw puzzle.
Features illustrations of 50 bucket list
travel destinations. Includes poster guide.
Comes in novelty bucket packaging. Made
using 80% recycled materials and 20%
FSC paper. Printed using soy inks.

Jigsaw size:

21.7 x 27.6 in
700 x 550 mm

Package size:

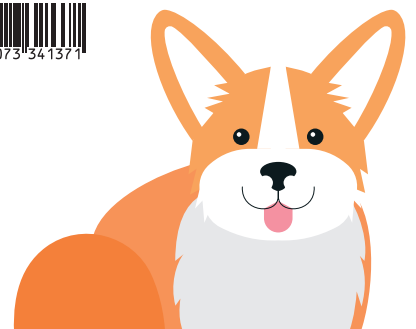
6.4 x 7.5 x 4.9 in
191 x 162 x 125 mm

Carton Quantity: 9

0810073341371



0 810073 341371





50 MUST-READ BOOKS OF THE WORLD BUCKET LIST 1000-PIECE PUZZLE

1000-piece reading-themed jigsaw puzzle. Features illustrations of 50 bucket list book recommendations. Includes poster guide. Comes in novelty bucket packaging. Made using 80% recycled materials and 20% FSC paper. Printed using soy inks.

Jigsaw size:

21.7 x 27.6 in
700 x 550 mm

Package size:

6.4 x 7.5 x 4.9 in
191 x 162 x 125 mm

Carton Quantity: 9

0810073341388



0 810073 341388



50 MUST-WATCH MOVIES BUCKET LIST 1000-PIECE PUZZLE

1000-piece movie-themed jigsaw puzzle. Features illustrations of 50 bucket list movie recommendations. Includes poster guide. Comes in novelty bucket packaging. Made using 80% recycled materials and 20% FSC paper. Printed using soy inks.

Jigsaw size:

21.7 x 27.6 in
700 x 550 mm

Package size:

6.4 x 7.5 x 4.9 in
191 x 162 x 125 mm

Carton Quantity: 9

0810073342491



0810073342491



COSTUMED CATS MEMORY GAME

Memory card game where you try to match cats and their costumed companions. Includes 50 cards and instructions.

Package size:

7.1 x 5.7 x 2 in

145 x 180 x 50 mm

Carton Quantity: 24

5055923776148



5 055923 776148 >



DRESSED UP DOGS MEMORY GAME

Memory card game where you try to match dogs and their dressed up companions. Includes 50 cards and instructions.

Package size:

7.1 x 5.7 x 2 in

145 x 180 x 50 mm

Carton Quantity: 24

5055923776155



5 055923 776155 >





CAT LOVER'S 1000-PIECE JIGSAW PUZZLE

Features hand illustrated artwork of cats and characteristics of each breed. Includes a poster guide. Packaged in a card tube.

Jigsaw size:

21.7 x 27.6 in
700 x 550 mm

Package size:

4.5 x 12 x 4.5 in
306 x 115 x 115 mm

Carton Quantity: 12

5055923785751



5 055923 785751 >



DOG LOVER'S 1000-PIECE JIGSAW PUZZLE

Features hand illustrated artwork of dogs and characteristics of each breed. Includes a poster guide. Packaged in a card tube.

Jigsaw size:

21.7 x 27.6 in
700 x 550 mm

Package size:

4.5 x 12 x 4.5 in
306 x 115 x 115 mm

Carton Quantity: 12

5055923785768



5 055923 785768 >



ENDANGERED WORLD 1000-PIECE JIGSAW PUZZLE

Nature-themed circular jigsaw puzzle. 1000 pieces. Features hand illustrated artwork of endangered species and habitats. Includes poster guide. Packaged in a card tube.

Jigsaw size:

26.8 x 26.8 in

680 x 680 mm

Package size:

4.5 x 12 x 4.5 in

306 x 115 x 115 mm

Carton Quantity: 12

5055923781180



5 055923 781180 >



NEW BIRD LOVER'S 1000-PIECE JIGSAW PUZZLE

Bird-themed circular jigsaw puzzle. 1000 pieces. Features hand-illustrated artwork of birds. Includes a map with information about migration, facts about the birds, and where they take flight. Packaged in a card tube.

Jigsaw Size:

26.8 x 26.8 in

680 x 680 mm

Package Size:

12 x 4.5 x 4.5 in

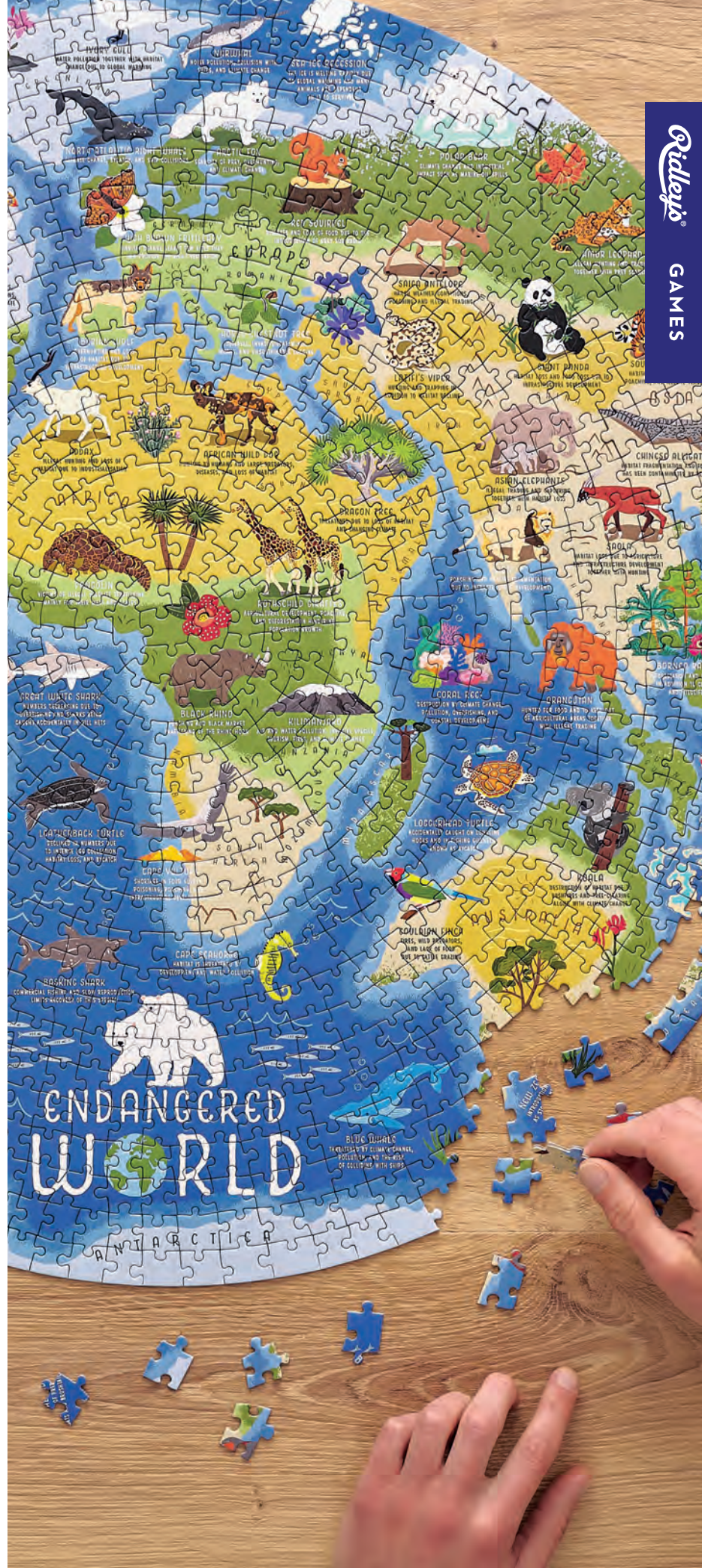
305 x 115 x 115 mm

Carton Quantity: 12

9781797229140



5 055923 781180 >






**STREET FOOD
1000-PIECE JIGSAW PUZZLE**

Food-themed circular jigsaw puzzle. 1000 pieces. Features hand illustrated artwork of street food from around the world. Includes poster guide. Packaged in a card tube.

Jigsaw size:
26.8 x 26.8 in
680 x 680 mm

Package size:
4.5 x 12 x 4.5 in
306 x 115 x 115 mm

Carton Quantity: 12
5055923781173 




**MAP OF THE STARS 1000-PIECE
JIGSAW PUZZLE**

Star-themed circular jigsaw puzzle. 1000 pieces. Features hand illustrated artwork of constellations. Includes poster guide. Packaged in a card tube.

Jigsaw size:
26.8 x 26.8 in
680 x 680 mm

Package size:
4.5 x 12 x 4.5 in
306 x 115 x 115 mm

Carton Quantity: 12
0810073340633 





VINYL RECORD DOMINOES

Play the classic game of Dominoes but matching colors in place of the traditional numbers. Includes 28 vinyl record-shaped Dominoes and instructions. Packaged in a novelty vinyl record-shaped tin. Ages 8+. 2-4 players. Average 20 mins gameplay.

CDU size:

4.6 x 8.6 x 6.7 in
219 x 117 x 170 mm

Package size:

4.4 x 4.3 x .9 in
110 x 113 x 22 mm

Carton Quantity: 24

0810073340091  



For internal store use only.

Cannot be ordered in individual units.

5055923776216



DISNEY 100 WORLD STAMP ANNIVERSARY JIGSAW PUZZLE

Get ready to celebrate 100 years of Disney magic with this Disney 100 World Stamp Anniversary 500-Piece Jigsaw Puzzle! Featuring beautiful artwork of Disney's most treasured classic and modern films set on postage stamps, the entire family will adore piecing together this truly special 500-piece rectangular puzzle. From *Beauty and the Beast* to *Toy Story* and many more, you'll be sure to spot your favourite Disney film. Perfect for kids, families, and Disney lovers, it comes packaged in a premium tin tube ready for gifting. Jigsaw made using 74% recycled materials; poster made using FSC paper; printed using soy inks.

Jigsaw size:

500 x 350mm

Package size:

215 x 105 x 105mm

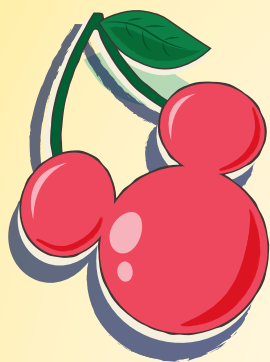
Carton Quantity: 12

0810073342521



©Disney

©Disney/Pixar



DISNEY MICKEY MAYHEM! CDU OF 6

SPLAT! It's time for fruit-filled fun with the world's most recognised icon: Disney's Mickey Mouse! This fast-paced card-matching game is frenetic, and things could get messy, but you'll create memories that last a lifetime. Includes 64 Mickey Mouse Fruit cards, 4 Fruit Mix-Up cards, 4 Freeze cards, 3 New Basket cards, 1 Clear Hand card, and EFIGS instructions. Ages 6+. 2-6 players. Average 10 mins gameplay. Printed using FSC paper and soy inks, the game comes in a Mickey Mouse-shaped tin that is recyclable.


CDU size:

127 x 283 x 146mm

Package size:

119 x 135 x 40mm

Carton Quantity: 24

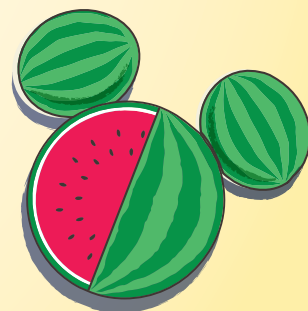
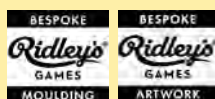
0810073343115 






For internal store use only.

Cannot be ordered in individual units.
0810073342910

©Disney



2-6  6+  10  MINS

PIXAR PARTY



3-6  8+  15  MINS

DISNEY PIXAR PARTY CDU OF 6

Disney/Pixar-themed card game featuring dance gameplay. Includes 60 Game cards and EFIGS instructions. Ages 8+. 3-6 players. Average 15 mins gameplay. Packaged in 2-piece Pixar ball tin. Printed using FSC paper and soy inks.

CDU size:

110 x 228 x 338mm

Package size:

108 x 108 x 108mm

Carton Quantity: 24

0810073342101



0810073342101

For internal store use only. Cannot be ordered in individual units. 0810073341838

©Disney
©Disney/Pixar

Disney

THINK FAST!™

Ridley's
GAMES



DON'T FORGET
TO REMEMBER ALL
THE ANSWERS!

SHOUT AS MANY
GUESSES AS YOU
CAN THINK OF!


3+  8+  30  MINS

©Disney
©Disney/Pixar

DISNEY THINK FAST!

Fast-paced trivia party game with Disney theme. Includes 240 question cards, score pad, sand timer, pencil and instructions. Ages 8+. 3+ players. Average 30 mins gameplay.

Package size:
190 x 190 x 65mm

Carton Quantity: 100
5055923785249 



5 055923 785249

Disney

DRAWSOME™

**DRAW YOUR FAVOURITE
DISNEY & PIXAR CHARACTERS
AND YOUR FELLOW PLAYERS!**



DISNEY DRAWSOME

Ever wondered what Buzz Lightyear and Nemo would look like drawn together as one character, or what you'd look like as a Disney Princess? Find out in *Disney Drawsome* from Ridley's Games! Drawing game featuring cards with challenges to draw Disney and Pixar characters and fellow players. Includes 95 cards, 70 tokens, 5 drawing boards, 5 pens, 1 sand timer, 1 game die and instructions. Ages 8+. 3-10 players. Average 30 mins playtime.

Package size:

190 x 190 x 65mm

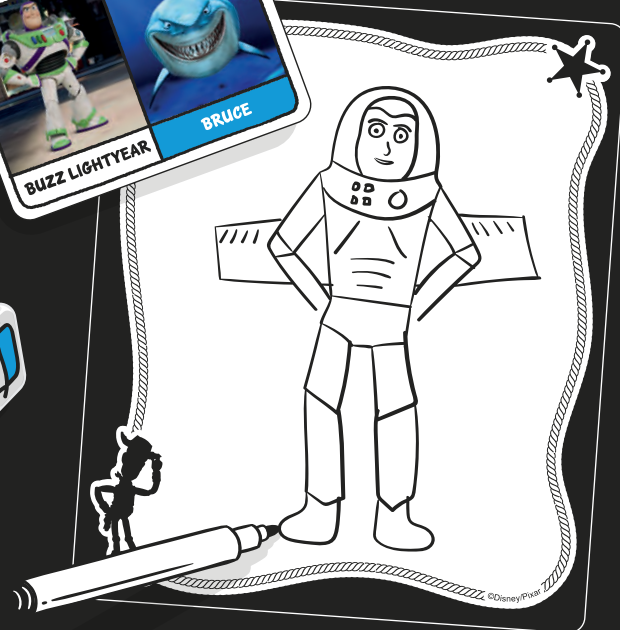
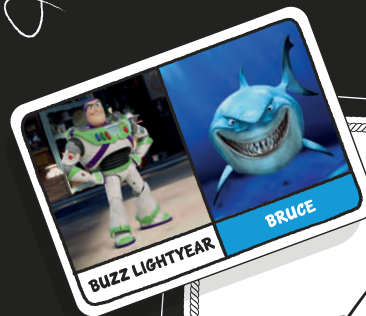
Carton Quantity: 18

5055923785263



©Disney

©Disney/Pixar



**EVER WONDERED WHAT YOU'D LOOK
LIKE AS A DISNEY VILLAIN, OR AS OLAF?
FIND OUT IN THIS HILARIOUS PARTY GAME!**
**THERE'S REALLY NO DRAWING TALENT
REQUIRED. ANYONE CAN JOIN IN THE
FUN AND BE DOODLING IN NO TIME!**

BESPOKE
Ridley's
GAMES
ARTWORK



MARVEL

ROOT FOR GROOT

THE CUTE CARD COLLECTING GAME
THAT REALLY GROWS ON YOU

2-5  8+  15  MINS



MARVEL ROOT FOR GROOT CDU OF 6

Cute card collecting game with Marvel's Groot theme. Includes 61 cards and EFIGS instructions. Packaged in Groot head moulded case. Ages 8+. 2-5 players. Average 15 mins gameplay.

CDU size:

180 x 195 x 298mm

Package size:

160 x 94 x 100mm

Carton Quantity: 36

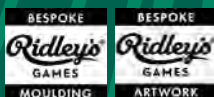
0810073342071



0810073341807

For internal store use only.
Cannot be ordered in individual units.
0810073341807

©2022 MARVEL



MARVEL

SPIDEY SENSE SHOWDOWN

THE WEB-SLINGING CARD GAME OF SUPERFAST REACTIONS



MARVEL SPIDEY SENSE SHOWDOWN CDU OF 6

Spider-Man must race to defeat as many of his famous adversaries as possible in Marvel Spidey Sense Showdown, an original, fast reaction card game from Ridley's Games! Packaged in moulded Spider-Man head. Includes 80 game cards and EFIGS instructions. Ages 6+. 2-8 players. Average 15 mins gameplay.

CDU size:
293 x 192 x 308mm

Package size:
113 x 91 x 97mm

Carton Quantity: 36
0810073340411



BESPOKE
Ridley's
GAMES
MOULDING



For internal store use only.
Cannot be ordered in individual units.
0810073340367

2-8 6+ 15 MINS

©2021 MARVEL

MARVEL

HULK SMASH!

THE FAST-SMASHING CARD GAME OF HEROES AND VILLAINS



MARVEL HULK SMASH! CDU OF 6

The Hulk and the Avengers have assembled to save the day in Marvel Hulk Smash, an original fast reaction card game from Ridley's Games! Packaged in moulded Hulk hand. Includes 90 game cards and EFIGS instructions. Ages 6+. 2-8 players. Average 15 mins gameplay.

CDU size:
332 x 235 x 268mm

Package size:
105 x 108 x 96mm

Carton Quantity: 36
0810073340404



BESPOKE
Ridley's
GAMES
MOULDING



For internal store use only.
Cannot be ordered in individual units.
0810073340350

2-8 6+ 15 MINS

©2021 MARVEL

Ridley's
GAMES

2
Player



MARVEL

JIGSAW DUEL

THANOS

VS

IRON MAN



MARVEL AVENGERS JIGSAW DUEL

Who will claim victory in this Marvel Avengers Jigsaw Duel: Iron Man or Thanos? In this innovative competitive game, you and your fellow puzzler each have a 70-piece jigsaw to complete – but there is only one final piece that fits both puzzles. Place the final piece in the wooden stand, choose your side and get ready to race your opponent. The first person to put their jigsaw pieces together and then grab the final, double-sided piece wins the battle! Includes 2 x 70-piece jigsaw puzzles, wooden stand, and EFIGS instructions. Ages 8+. 2 players. Made using 50% recycled materials. Printed using FSC paper and soy inks.

Jigsaw size:

202 x 163 x 39mm

Package size:

202 x 163 x 39mm

Carton Quantity: 24

0810073342880



©2023 MARVEL



2-4  10+  20 
MINS

MARVEL SELFISH

Utterly ruthless behaviour will be needed if you want to be the first Villain to defeat the Avengers and reach the Infinity Stones in *Marvel Selfish* from Ridley's Games! Light strategy card game with Marvel theme. Includes 70 Mission cards, 42 Power cards, 24 Action cards, 4 Player cards, 1 Infinity Stones card, 4 player mats, 2 pile marker cards and instructions. Ages 10+. 2-4 players. Average 20 mins gameplay. Printed using FSC paper and soy inks.

Package size:

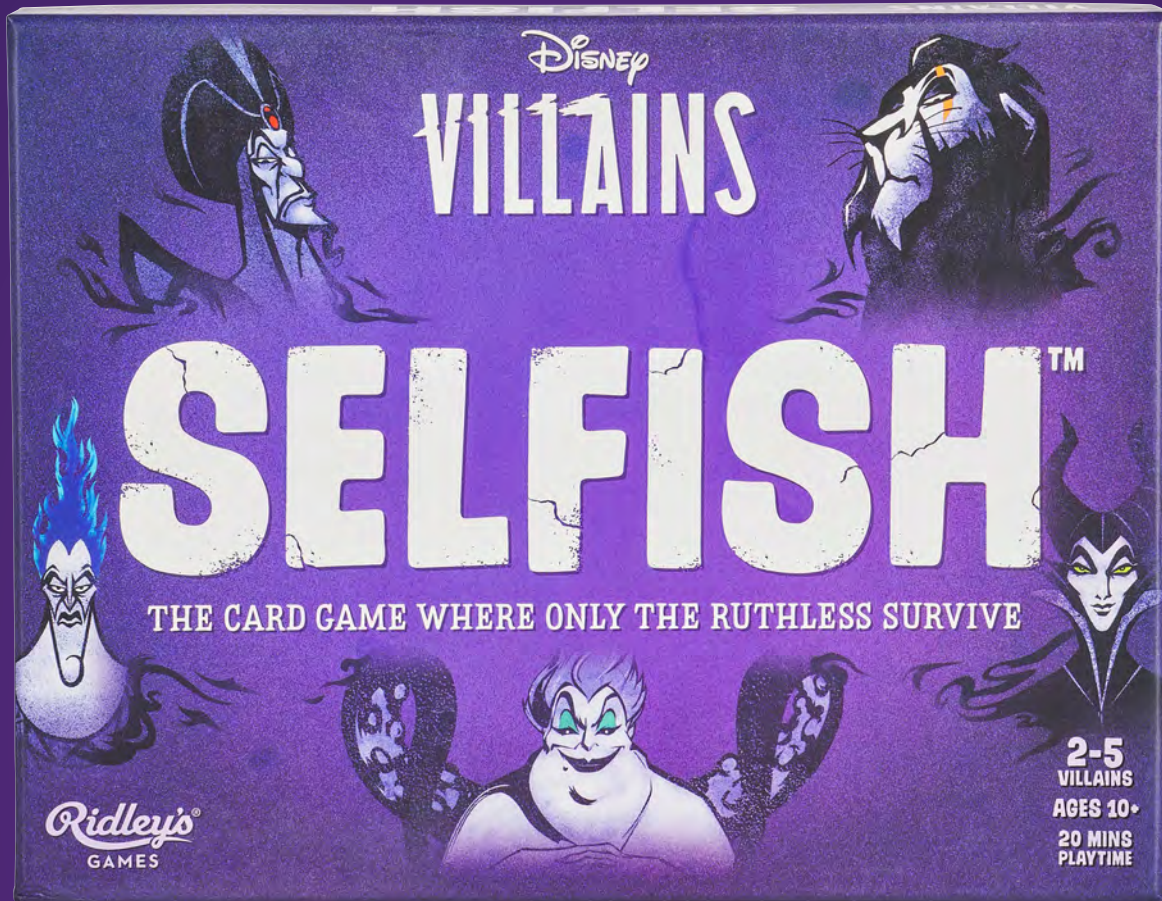
162 x 209 x 45mm

Carton Quantity: 24

0810073341814



Disney



2-5 10+ 20 MINS

DISNEY VILLAINS SELFISH

Utterly villainous behaviour will be needed if you want to be the ultimate Disney Baddie and seize the throne in this *Disney Villains Selfish* game from Ridley's Games! Light strategy card game with Disney Villains theme. Includes 70 Quest cards, 48 Control cards, 30 Evil Deed cards, 5 Player cards, 1 Throne card, 5 player mats and instructions. Ages 10+ 2-5 players. Average 20 mins gameplay.

Package size:

162 x 209 x 45mm

Carton Quantity: 24

0810073340381



0 810073 340381



STAR WARS™

Ridley's
GAMES



2-5 8+ 20 MINS

STAR WARS SELFISH

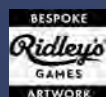
You are searching the galaxy for the Rebel scum aboard the *Millennium Falcon* in *Star Wars Selfish* from Ridley's Games! Light strategy card game with *Star Wars* theme. Includes 48 Fuel cards, 39 Space cards, 31 Upgrade cards, 5 Player cards, 1 Millennium Falcon card, 5 player mats and instructions. Ages 8+. 2-5 players. Average 20 mins gameplay.

Package size:

162 x 209 x 45mm

Carton Quantity: 24

0810073340374



© & TM Lucasfilm Ltd

**STAR
WARS**

THE CHILD'S CUTE LOOT CARD GAME

Ridley's
GAMES



STAR WARS THE CHILD'S CUTE LOOT CDU OF 6

Collect, attack and take naps in *The Child's Cute Loot* card game from Ridley's Games! Collect The Child's favourite things in this cute yet cunning card game. Themed around The Child, from *Star Wars The Mandalorian* universe. Packaged in The Child fabric case. Includes 60 Game cards, 15 Action cards and EFIGS instructions. Ages 8+. 3-5 players. Average 30 mins gameplay.

CDU size:

285 x 296 x 140mm

Package size:

160 x 180 x 50mm

Carton Quantity: 24

0810073340244



For internal store use only.
Cannot be ordered in individual units.
5055923785638



© & TM Lucasfilm Ltd

3-5 8+ 30 MINS

BESPOKE
Ridley's
GAMES
ARTWORK

STAR WARS



DON'T UPSET THE WOOKIEE!

THE CARD GAME OF YOUR FAVOURITE FUZZBALL!



STAR WARS DON'T UPSET THE WOOKIEE! CDU OF 6

It's not wise to upset a Wookiee! Make sure you *Don't Upset the Wookiee* in this family-friendly original *Star Wars* themed card game from Ridley's Games! Packaged in Wookiee plush. Includes 54 game cards and EFIGS instructions. Ages 8+. 2-5 players. Average 20 mins gameplay.

CDU size:

358 x 188mm x 246mm

Package size:

200 x 170 x 70mm

Carton Quantity: 24

0810073340237



For internal store use only.
Cannot be ordered in individual units.
5055923785218

2-5 8+ 20 MINS

© & TM Lucasfilm Ltd

STAR WARS

FORCE BATTLE

TIME TO TEST YOUR JEDI REFLEXES



STAR WARS FORCE BATTLE CDU OF 6

Pick a side in this epic battle between the Light and Dark Side of the Force in *Star Wars Force Battle* from Ridley's Games! Fast-paced original card game with The Force theme. Packaged in Darth Vader mask moulded case. Includes 81 game cards and EFIGS instructions. Ages 6+. 2-8 players. Average 15 mins gameplay.

CDU size:

309 x 225 x 328mm

Package size:

111 x 117 x 110mm

Carton Quantity: 36

0810073340428



For internal store use only.
Cannot be ordered in individual units.
0810073340398

2-8 6+ 15 MINS

© & TM Lucasfilm Ltd

STAR
WARS

HAN SOLO SOLITAIRE

THE CLASSIC CARD GAME,
CARBON FROZEN



1-2  8+  20  MINS

For internal store use only.
Cannot be ordered in individual units.
0810073341753



© & TM Lucasfilm Ltd.

STAR WARS HAN SOLO SOLITAIRE CDU OF 6

The classic game of Solitaire with Star Wars Han Solo theme and optional Jedi twist. Includes 54 playing cards and EFIGS instructions. Packaged in tin with Han Solo in carbonite embossed detail. Ages 8+. 1-2 players. Average 20 mins gameplay. Printed using FSC paper and soy inks.

CDU size:
110 x 76 x 235mm

Package size:
107 x 75 x 40mm

Carton Quantity: 24
0810073342095  



STAR WARS™

THE MANDALORIAN

PRECIOUS CARGO

2-6  8+  10  MINS



STAR WARS THE MANDALORIAN PRECIOUS CARGO CDU OF 6

Card throwing game with *Star Wars The Mandalorian* theme. Includes 72 cards, 8 character discs, 1 Grogu disc and instructions. Packaged in two-piece Mandalorian helmet case. Ages 8+. 2-6 players. Average 10 mins gameplay.


CDU size:

170 x 215 x 320mm

Package size:

160 x 115 x 112mm

Carton Quantity: 36

0810073342064 



0810073342064

For internal store use only.

Cannot be ordered in individual units.

0810073341791

© & TM Lucasfilm Ltd.

BESPOKE
Ridley's
GAMES
MOULDING

Ridley's
GAMES



STAR WARS

JIGSAW DUEL

DARTH
VADER

VS

OBI-WAN
KENOBI



STAR WARS JIGSAW DUEL

Who will claim victory in this Star Wars Jigsaw Duel: Obi-Wan Kenobi or Darth Vader? In this innovative competitive game, you and your fellow puzzler each have a 70-piece jigsaw to complete – but there is only one final piece that fits both puzzles. Place the final piece in the wooden stand, choose your side and get ready to race your opponent. The first person to put their jigsaw pieces together and then grab the final, double-sided piece wins the battle! Includes 2 x 70-piece jigsaw puzzles, wooden stand, and EFIGS instructions. Ages 8+. 2 players. Made using 50% recycled materials. Printed using FSC paper and soy inks.

Jigsaw size:

230 x 145mm

Package size:

202 x 163 x 39mm

Carton Quantity: 24

0810073342941



0810073342941

© & TM Lucasfilm Ltd.



DEATH STAR 1000-PIECE JIGSAW PUZZLE



STAR WARS DEATH STAR 1000-PIECE JIGSAW PUZZLE

Double-sided 1000-piece jigsaw puzzle shaped to resemble the iconic *Death Star* from *Star Wars*. On one side is a full-colour image of the *Death Star*'s exterior, on the other side is the schematic blueprint of the space station with key features labelled. Includes poster guide. Packaged in paper bag inside a card tube sealed with paper tamper seals, this product is plastic-free. Ages 8+.

Jigsaw Size:

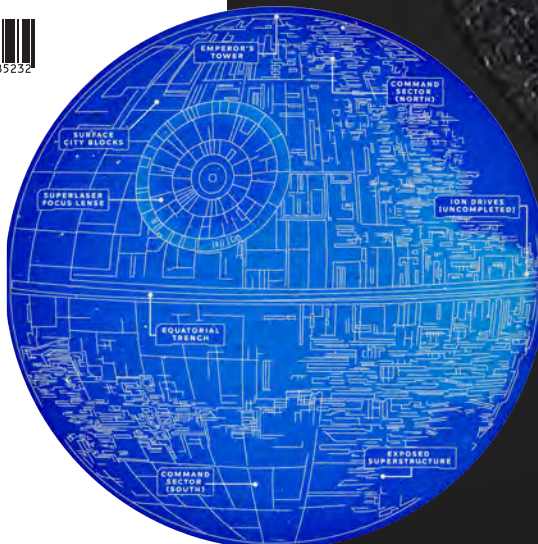
680 x 680mm

Package Size:

306 x 115 x 115mm

Carton Quantity: 12

5055923785232



MILLENNIUM FALCON

1000-PIECE

JIGSAW PUZZLE



STAR WARS MILLENNIUM FALCON 1000-PIECE JIGSAW PUZZLE

Double-sided 1000-piece jigsaw puzzle shaped to resemble the iconic *Millennium Falcon* from *Star Wars*. On one side is a full-colour image of the *Millennium Falcon*, on the other side is a schematic of the starship with key elements labelled. Includes poster guide. Packaged in paper bag inside a card tube sealed with paper tamper seal stickers, this product is plastic-free. Ages 8+.

Jigsaw Size:

617 x 791mm

Package Size:

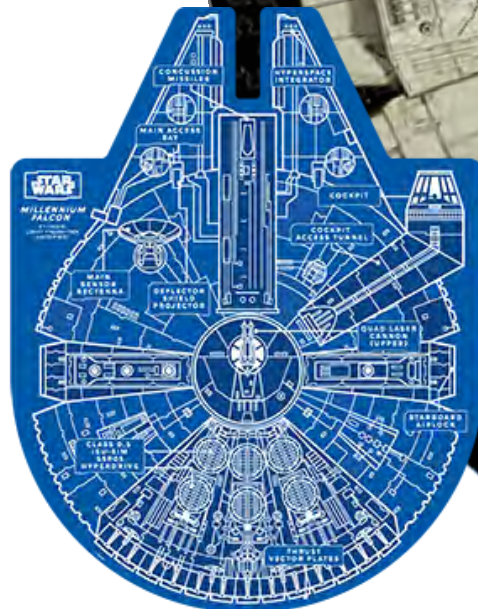
306 x 115 x 115mm

Carton Quantity: 12

0810073341784



0810073341784



TRIVIA GAMES



DISNEY TRIVIA

From *Mulan* to *Finding Nemo*, put your Disney knowledge to the test with this *Disney Trivia* from Ridley's Games! Trivia game with Disney and Pixar theme. 140 multiple choice questions. Includes instructions. Ages 12+.

Package size:

91 x 128 x 54mm

Carton Quantity: 24

5055923785256



MARVEL TRIVIA

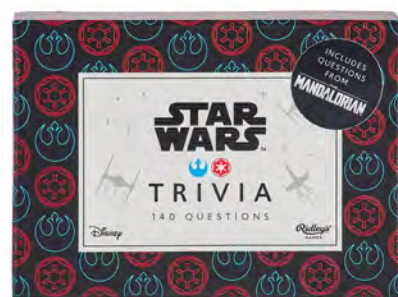
Think you're the ultimate Marvel fan? Put your knowledge to the test with this *Marvel Trivia* from Ridley's Games! Trivia game with Marvel Cinematic Universe theme. 140 multiple choice questions. Includes instructions. Ages 12+.

Package size:

91 x 128 x 54mm

Carton Quantity: 24

5055923785294



STAR WARS TRIVIA

Put your powers to the test with this *Star Wars Trivia* from Ridley's Games to challenge even the most dedicated *Star Wars* fan. Trivia game with *Star Wars* theme. 140 multiple choice questions. Includes instructions. Ages 12+.

Package size:

91 x 128 x 54mm

Carton Quantity: 24

5055923785225



©Disney
©Disney/Pixar
© 2021 MARVEL
© & TM Lucasfilm Ltd

Ridley's®
GAMES